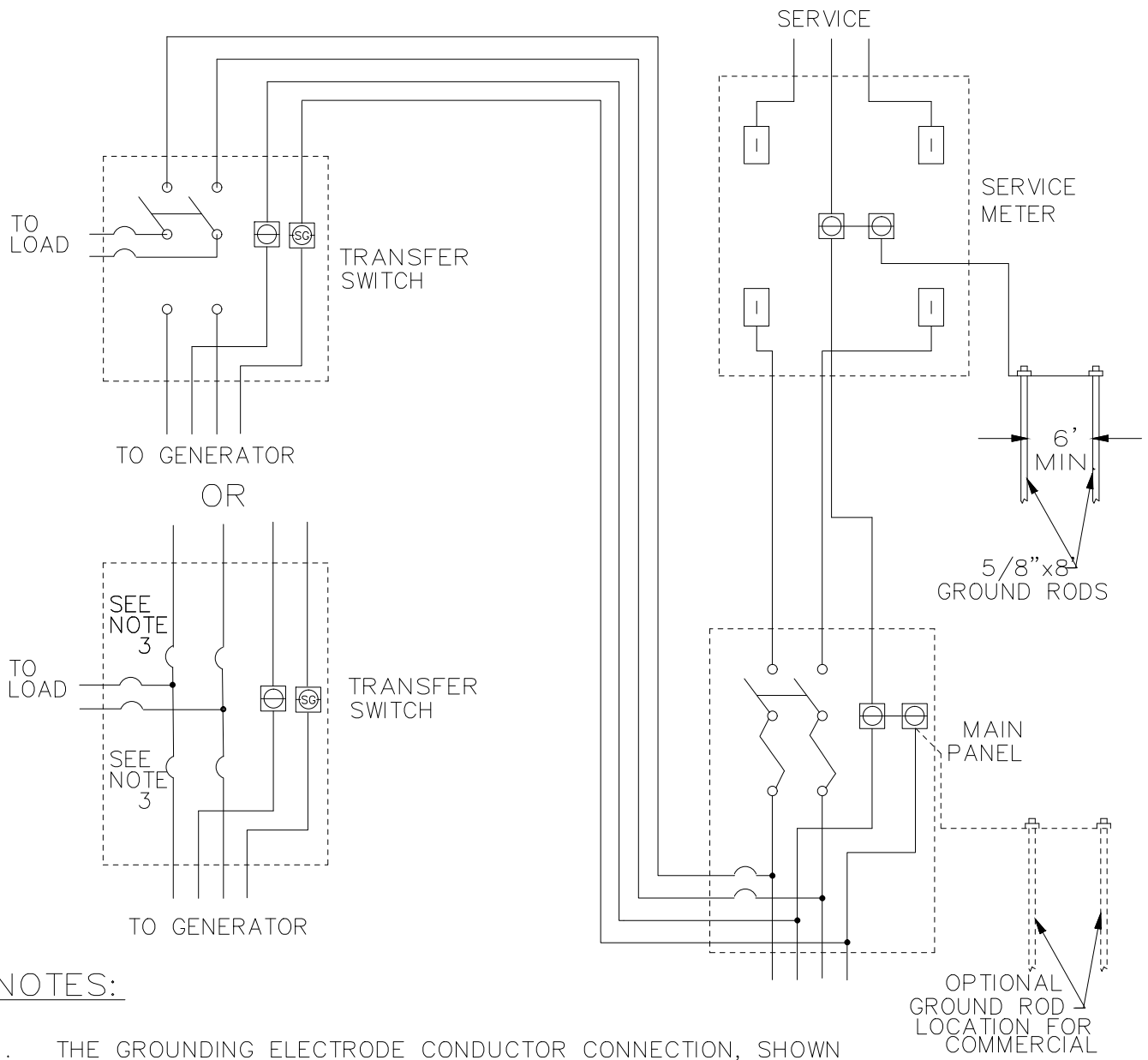



TYPICAL SWITCHING OF CUSTOMERS  
EMERGENCY SUPPLY - ALTERNATE CONNECTION  
 THREE WIRE, SINGLE PHASE SERVICE



NOTES:

1. THE GROUNDING ELECTRODE CONDUCTOR CONNECTION, SHOWN IN THE METER SOCKET, MAY BE LOCATED IN THE DISTRIBUTION PANEL.
2. COMMERCIALLY AVAILABLE STANDBY GENERATORS MAY BE WIRED WITH THE SAFETY GROUND BONDED TO THE NEUTRAL. IF SO, REMOVE THE BOND.
3. THE SCHEMATIC REPRESENTS A DEVICE WITH TWO BREAKERS THAT ARE MECHANICALLY LINKED SUCH THAT ONE OF THE PAIR IS ALWAYS OPEN. IF SUCH DEVICES ARE ACCEPTABLE THEY SHALL NOT BE EASILY DISABLED OR BROKEN (ALLOWING THE TWO SOURCES TO BE INTERCONNECTED).
4. METALLIC ENCLOSURES WITHIN ARM'S REACH SHALL BE BONDED TOGETHER IN SUCH A WAY TO PREVENT THE BONDING CONDUCTOR FROM CARRYING RETURN CURRENT.

						 VERMONT ELECTRIC COOPERATIVE INC. JOHNSON, VT TYPICAL SWITCHING OF CUSTOMER'S EMERGENCY SUPPLY - ALTERNATE CONNECTION
REV	DATE	REVISION DESCRIPTION	DRN	CKD	DATE: 07/10/2017	DWG. NO. 402 Page 2 REV <span style="border: 1px solid black; padding: 2px;">1</span>